



CLEANCHAIN CHEMICAL MODULE

The CleanChain Chemical Module allows textile manufacturers and brands to communicate seamlessly on supply chain conformance. Brands can visualize their complex supply chains and keep track of their supplier inventories, adding transparency and traceability to their everyday operations.

Suppliers can eliminate inefficient inventory tracking methods and focus on phasing out non-conformant chemicals, all while improving customer relationships and adding value to their business.

KEY FEATURES



CHEMICAL MANAGEMENT

Manage your chemicals with inventory uploads and monitor your conformance against industry standards such as the ZDHC MRSL.



INSIGHT INTO CHEMICAL USE

Get insight into your chemical management with advanced reporting and analytics. Automatically connect your chemicals to the ZDHC Gateway for up-to-date conformance data. Use our Product Library to make better informed sourcing and manufacturing decisions.



CONNECT & SHARE WITH CUSTOMERS

Securely share your progress with your customers and respond to customer-specific inventory product questions. Create better business relationships with chemical use transparency and share unlimited data with brands and supply chain partners.

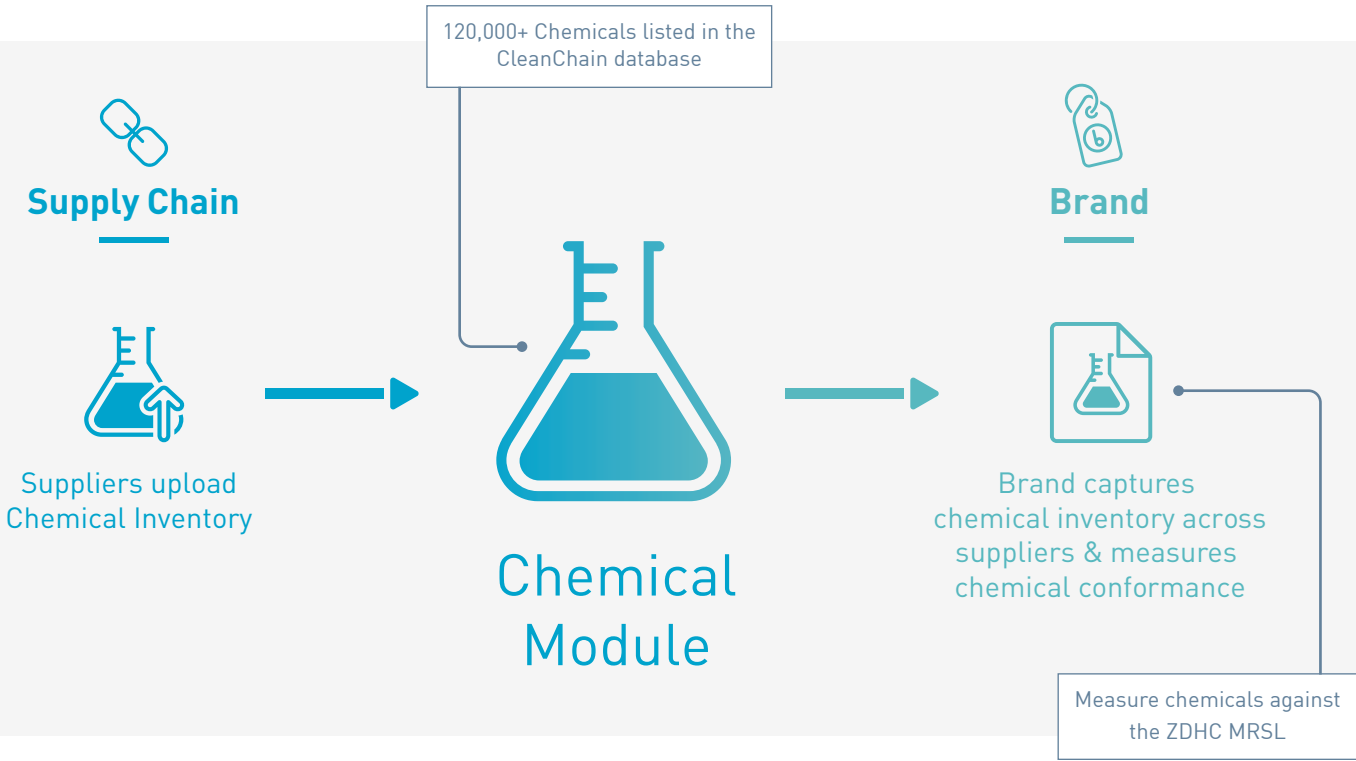
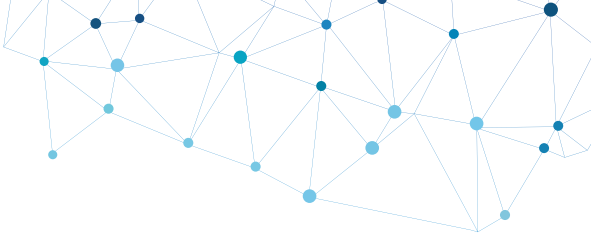


ZDHC PERFORMANCE INCHECK

Gain access to ZDHC Performance InCheck, which can be downloaded by month.



To learn more, visit cleanchain.com or contact us at cleanchaininfo@adec-innovations.com.



Track progress and improvement

See your percentage of products conforming within the ZDHC MRSL

Inventory Product Conformance



● Not Evaluated - 5.00%
● Conformant - 95.00%



ZDHC MRSL v1.1
● Level 1 - 8.42%
● Level 2 - 2.11%
● Level 3 - 89.47%

- Not Evaluated** - Products are not found in the ZDHC Gateways. Contact your Formulators to upload the products to ZDHC Gateway.
- Registered** - The chemical formulator has registered its company and uploaded the product details along with a valid SDS to the ZDHC Gateway. There is no MRSL conformance expected or implied by this level.
- Level 0** - The chemical formulator and product SDS are registered in the ZDHC Gateway and the formulator has submitted a self-declaration of ZDHC MRSL.
- Level 1** - The chemical formulator has provided a thirdparty review of documentation or an analytical test report for the product where the data meet the QA and QC requirements in the MRSL Conformance Guidance to be accepted as evidence of conformance.
- Level 2** - All requirements for Level 1 passed and passed a review of the product stewardship practices of the chemical supplier by the third-party certifier.
- Level 3** - All requirements for Level 2 passed and passed a site visit to the chemical formulator to evaluate their product stewardship first-hand.

Understanding conformance evaluation results